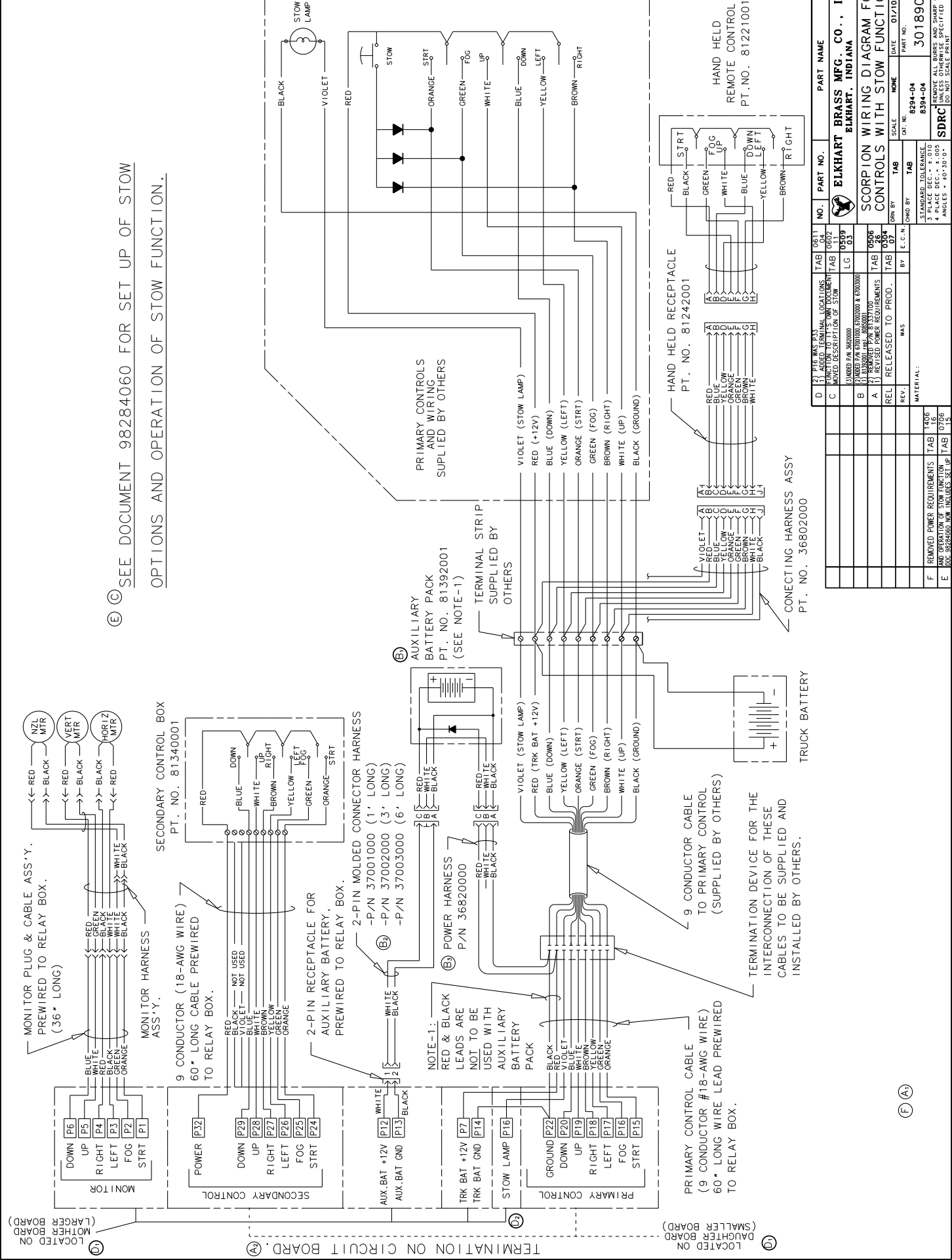


(E) SEE DOCUMENT 98284060 FOR SET UP OF STOW OPTIONS AND OPERATION OF STOW FUNCTION.



NO.	PART NO.	PART NAME	REV.
1	PT. NO. 81340001	SECONDARY CONTROL BOX	
2	PT. NO. 81392001	AUXILIARY BATTERY PACK	
3	PT. NO. 36820000	POWER HARNESS	
4	PT. NO. 81392001	AUXILIARY BATTERY PACK	
5	PT. NO. 36820000	POWER HARNESS	
6	PT. NO. 81242001	HAND HELD RECEPTACLE	
7	PT. NO. 81221001	HAND HELD REMOTE CONTROL	
8	PT. NO. 36802000	CONNECTING HARNESS ASSY	

REV.	DATE	BY	REASON
01	01/10/03		INITIAL RELEASE
02			REVISION
03			REVISION
04			REVISION
05			REVISION
06			REVISION
07			REVISION
08			REVISION
09			REVISION
10			REVISION

REV.	DATE	BY	REASON
01	01/10/03		INITIAL RELEASE
02			REVISION
03			REVISION
04			REVISION
05			REVISION
06			REVISION
07			REVISION
08			REVISION
09			REVISION
10			REVISION

REV.	DATE	BY	REASON
01	01/10/03		INITIAL RELEASE
02			REVISION
03			REVISION
04			REVISION
05			REVISION
06			REVISION
07			REVISION
08			REVISION
09			REVISION
10			REVISION